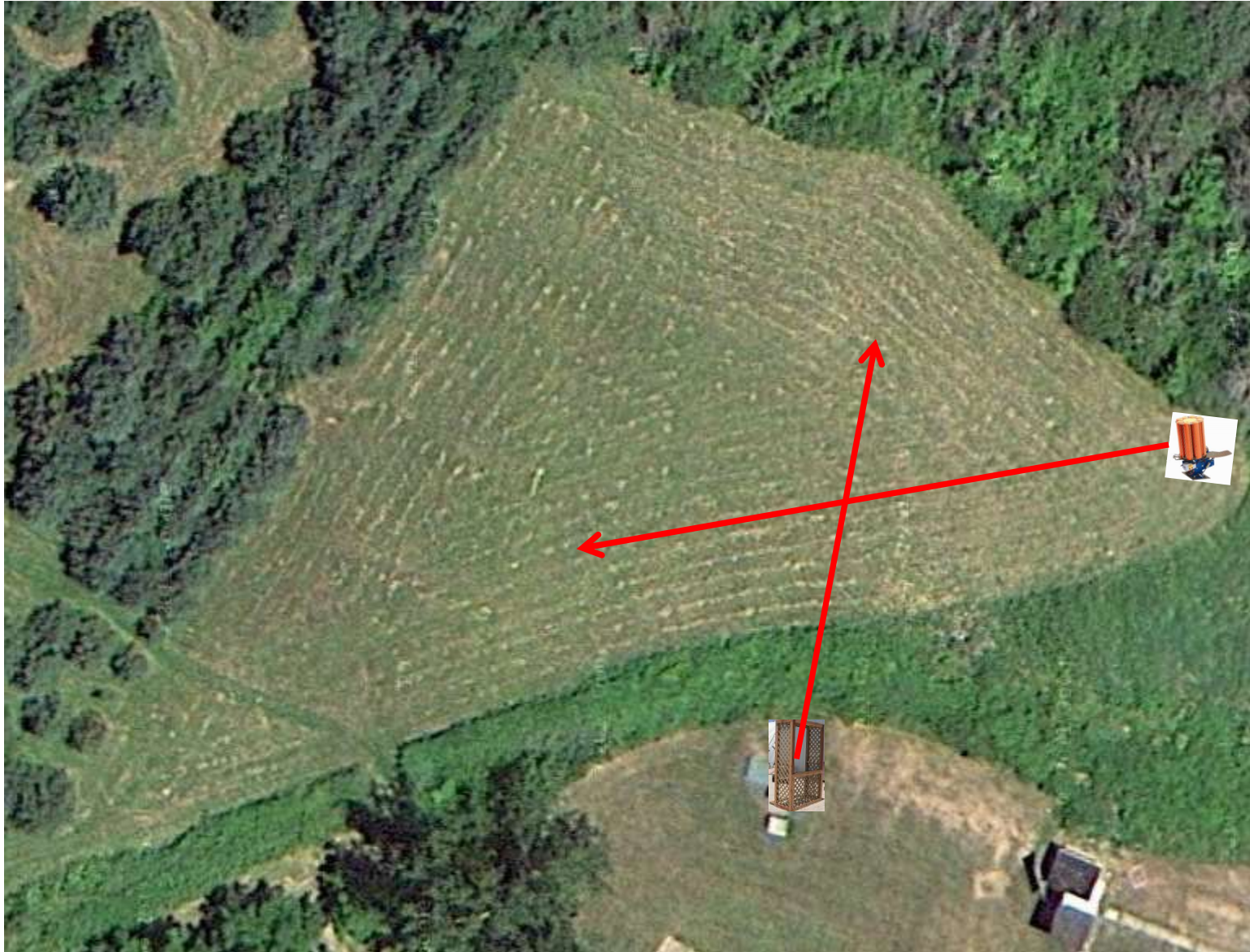


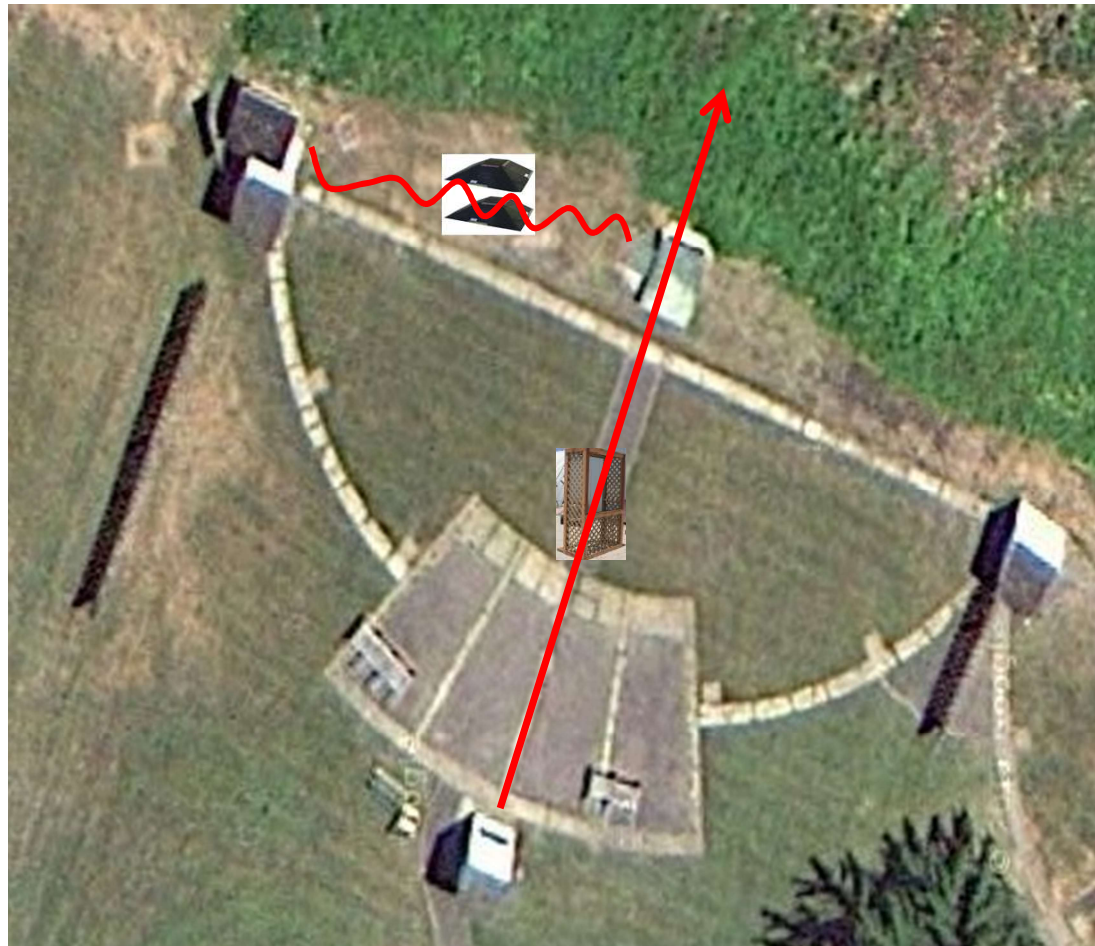
3 Report Pair (6)  
Promatic then Trap House

# Trap Field



2 Report Pair (4)  
Rabbit then Overhead

5-Stand



2 Simo Pair (4)  
Manual (Tiippy Trap)  
**MIDI's (Mid Size Targets)**

**Keep a Trapper at this Station All The Time**

# Skeet 2



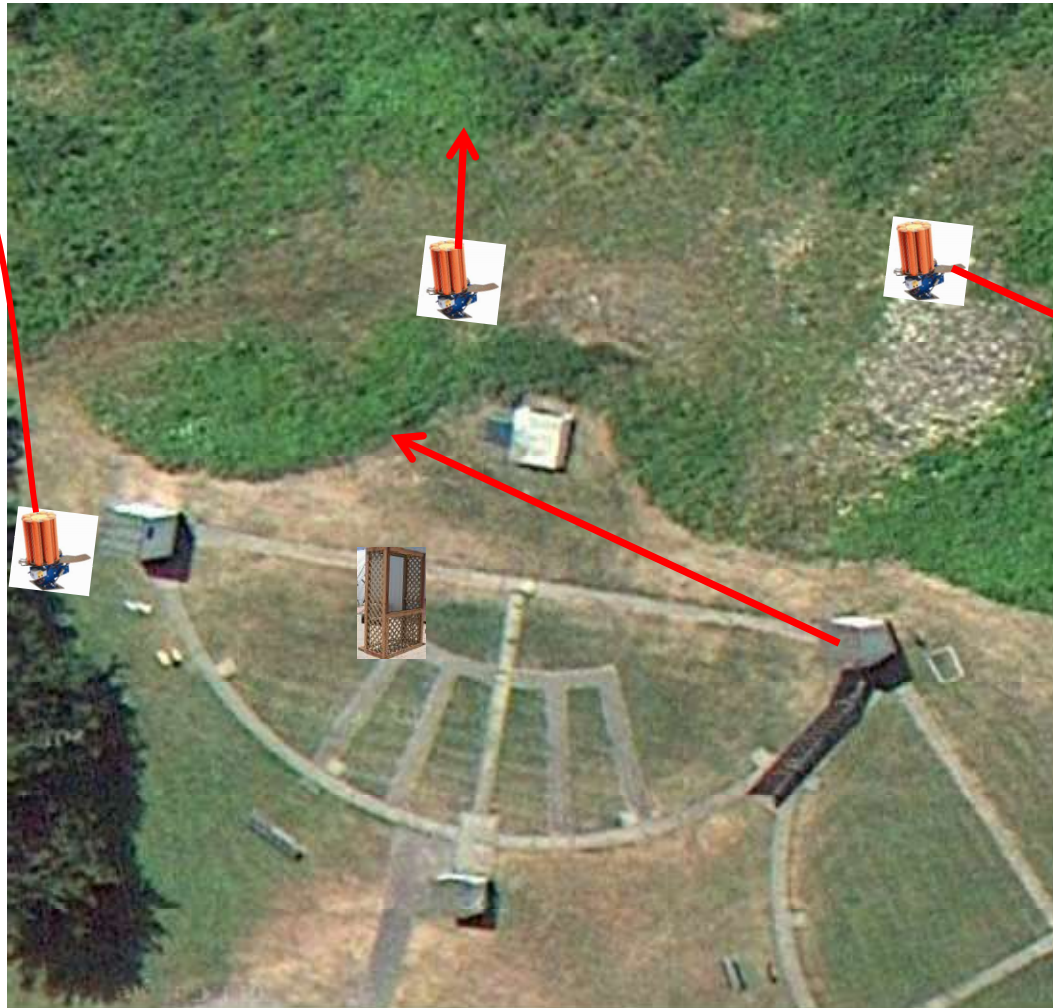
2 Following Pair (4)  
Promatic then Promatic  
(Hold the Button Down)

# Gallows



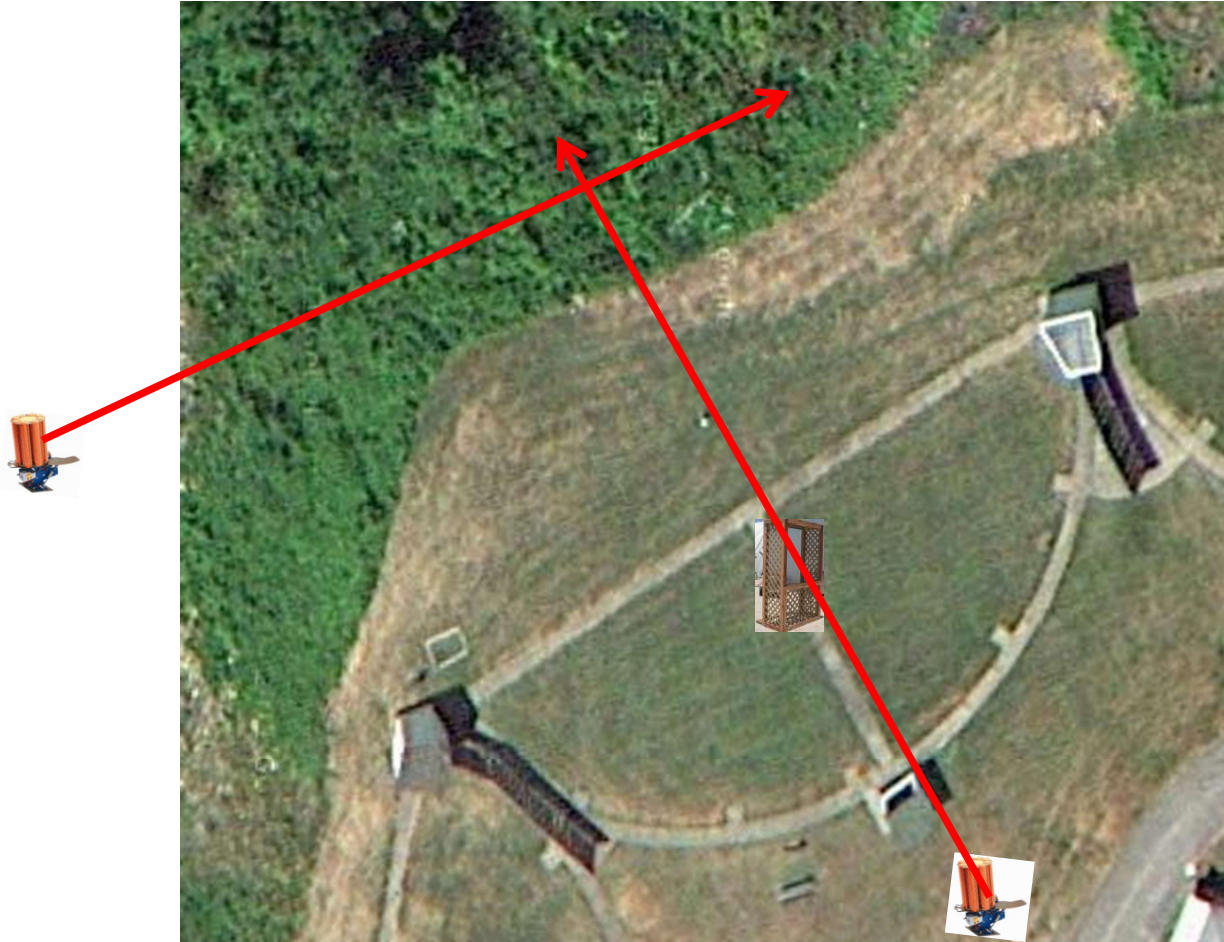
3 Report Pair (6)  
Low House then Promatic (Teal)

Skeet 3



3 Report Pair (6)  
Promatic (Crosser) then Promatic (Overhead)

# Skeet 4



3 Simo Pair (6)  
Promatic (Teal) and Promatic (Teal)

# Skeet 5



3 Following Pair (6)  
Mec Battue then Mec Battue  
**(\* Try Black Side Up \*)**  
**Lighten Spring A lot**

# Skeet 6

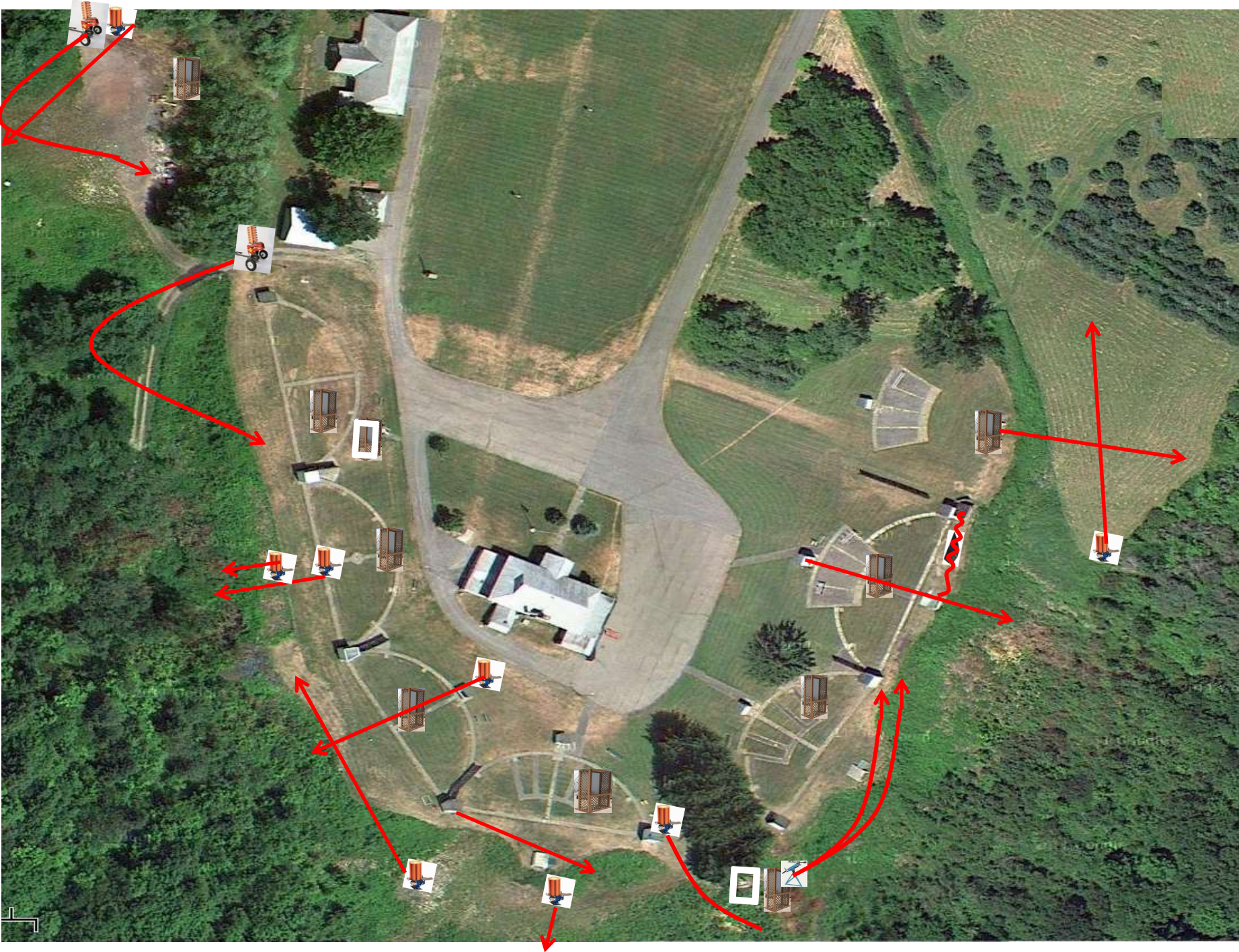




**4 Simo Pair (8)**  
Promatic (Teal) and Promatic (Chondel)

# The Pit





# The Menu – 11/04/2017

1) Trap Field	- 3 Report Pair	- Promatic then Trap House	(6)
2) 5-Stand	- 2 Report Pair	- Rabbit then Overhead	(4)
3) Skeet #2	- 2 Simo Pair	- Manual (MIDI's)	(4)
4) Gallows	- 2 Following Pair	- Promatic then Promatic <b>Hold the Button Down</b>	(4)
5) Skeet #3	- 3 Report Pair	- Low House then Promatic (Teal)	(6)
6) Skeet #4	- 3 Report Pair	- Promatic (Crosser) and Promatic (Overhead)	(6)
7) Skeet #5	- 3 Simo Pair	- Promatic (Teal) and Promatic (Teal)	(6)
8) Skeet #6	- 3 Following Pair	- Mec Battue then Mec Battue <b>Hold the Button Down</b>	(6)
9) The Pit	- 4 Simo Pair	- Promatic (Teal and Mec Chondel	(8)
			-----
			(50)