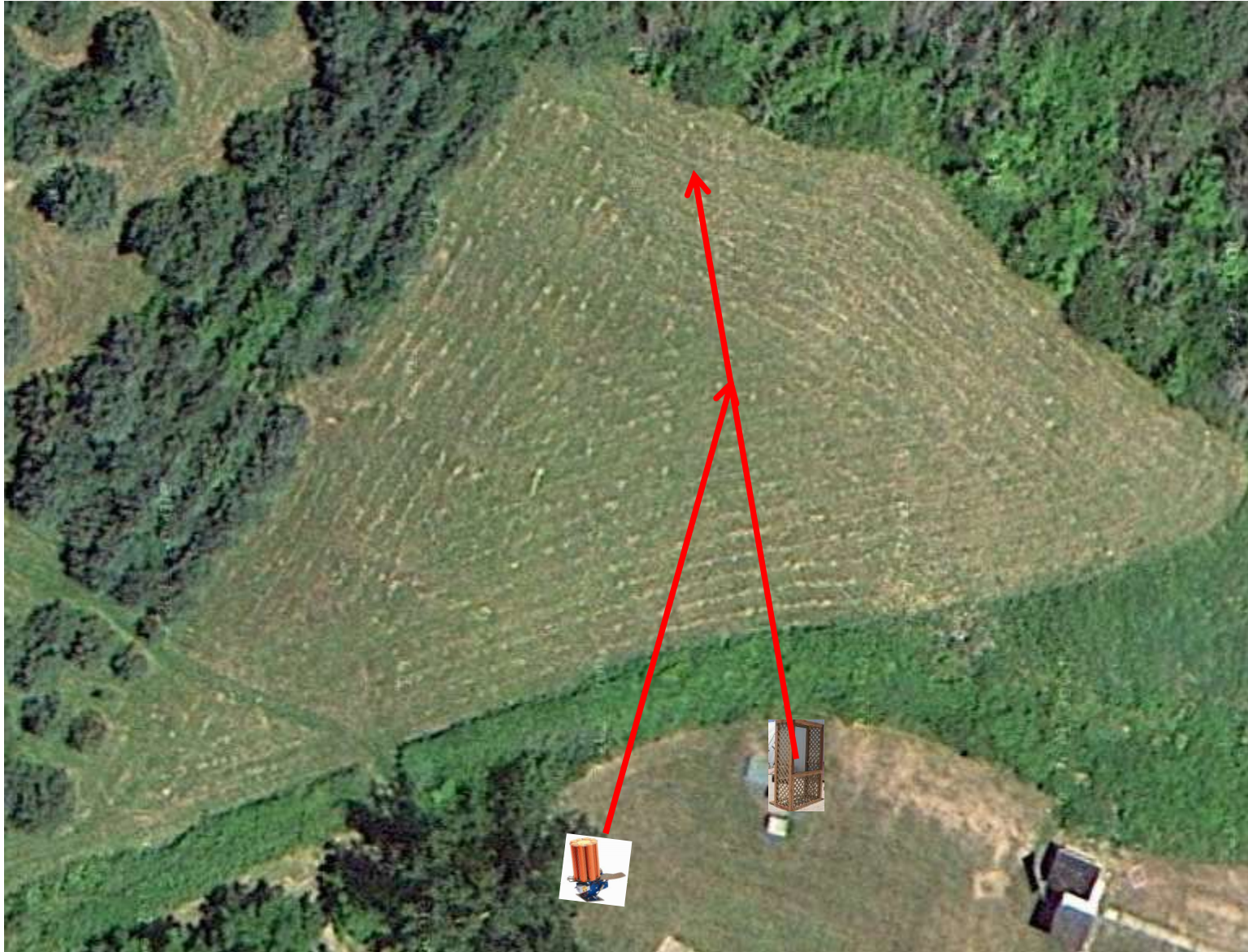


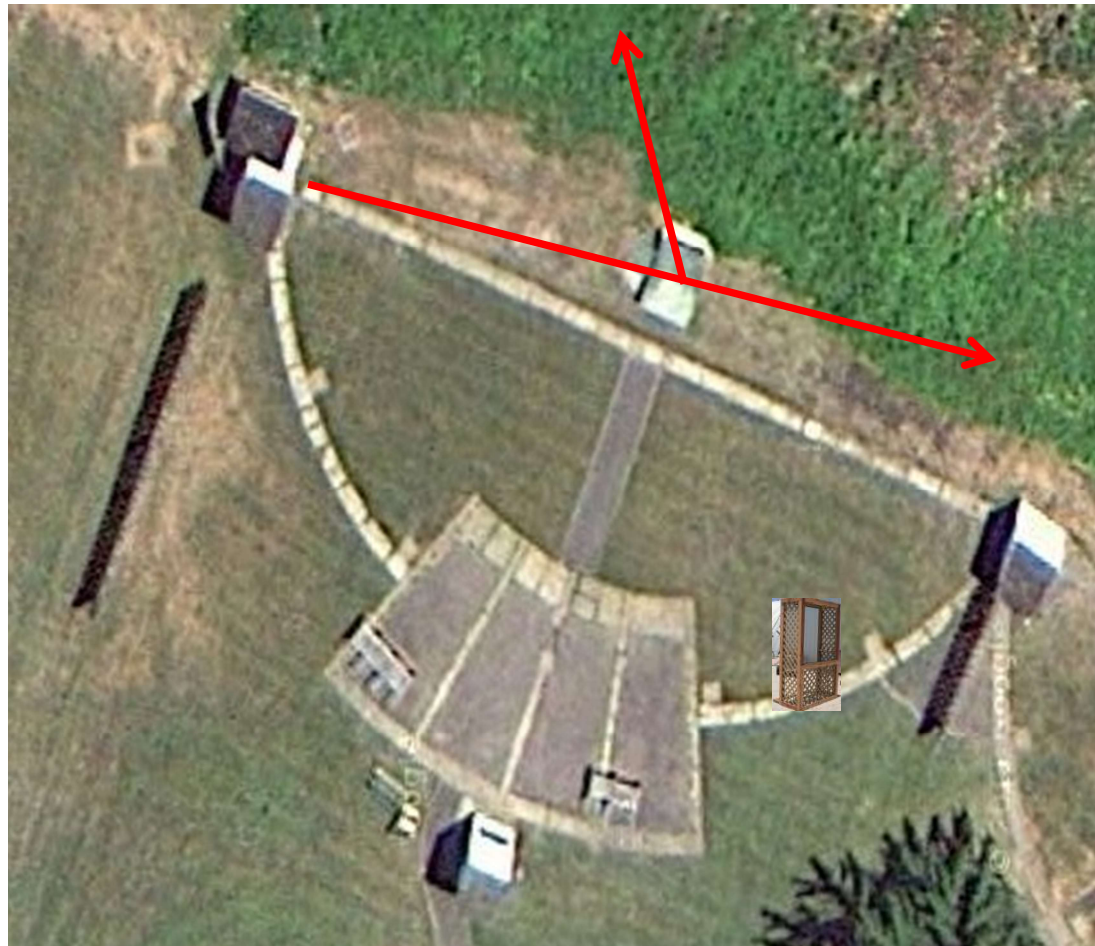
3 Simo Pair (6)
Trap House and Promatic
(Trap High – Promatic Same Level)

Trap Field



2 Report Pair (4)
Trap House then High House

5-Stand



Skeet 2

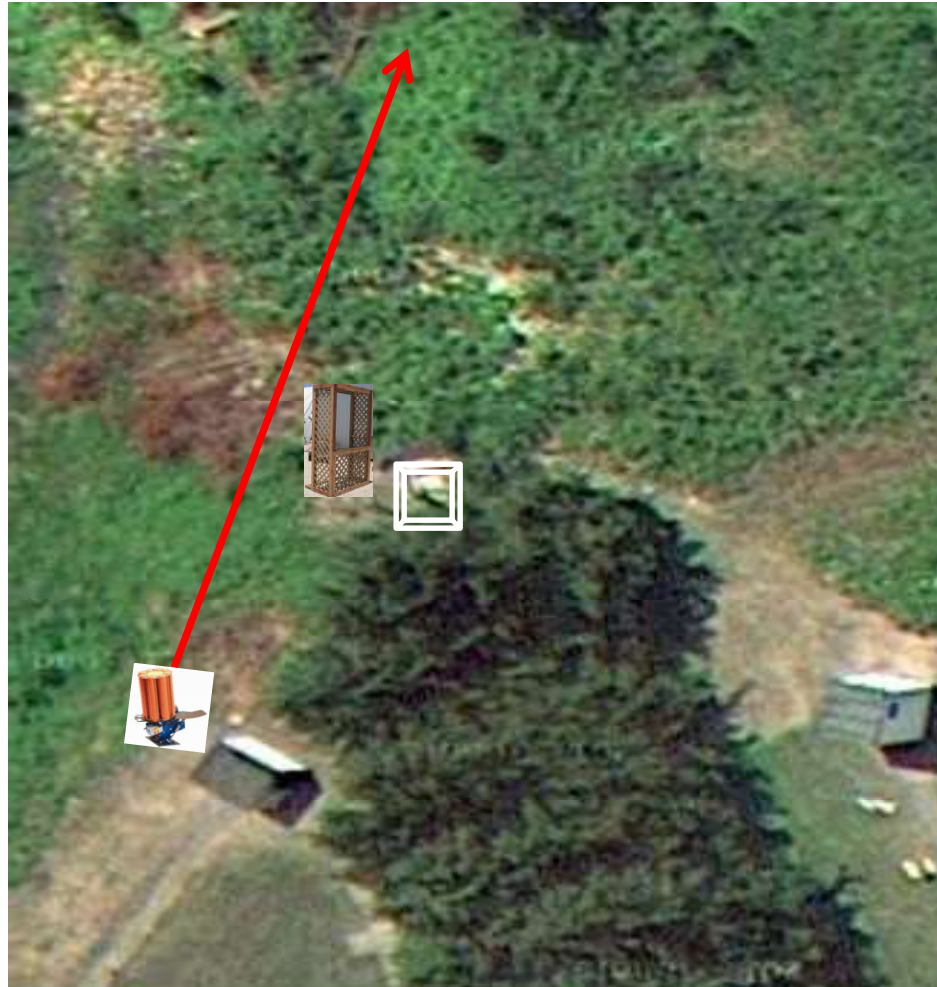
2 Simo Pair (4)
Manual (Tiippy Trap)
MIDI's (Mid Size Targets)

Keep a Trapper at this Station All The Time



2 Following Pair (4)
Promatic then Promatic
(Hold the Button Down)

Gallows



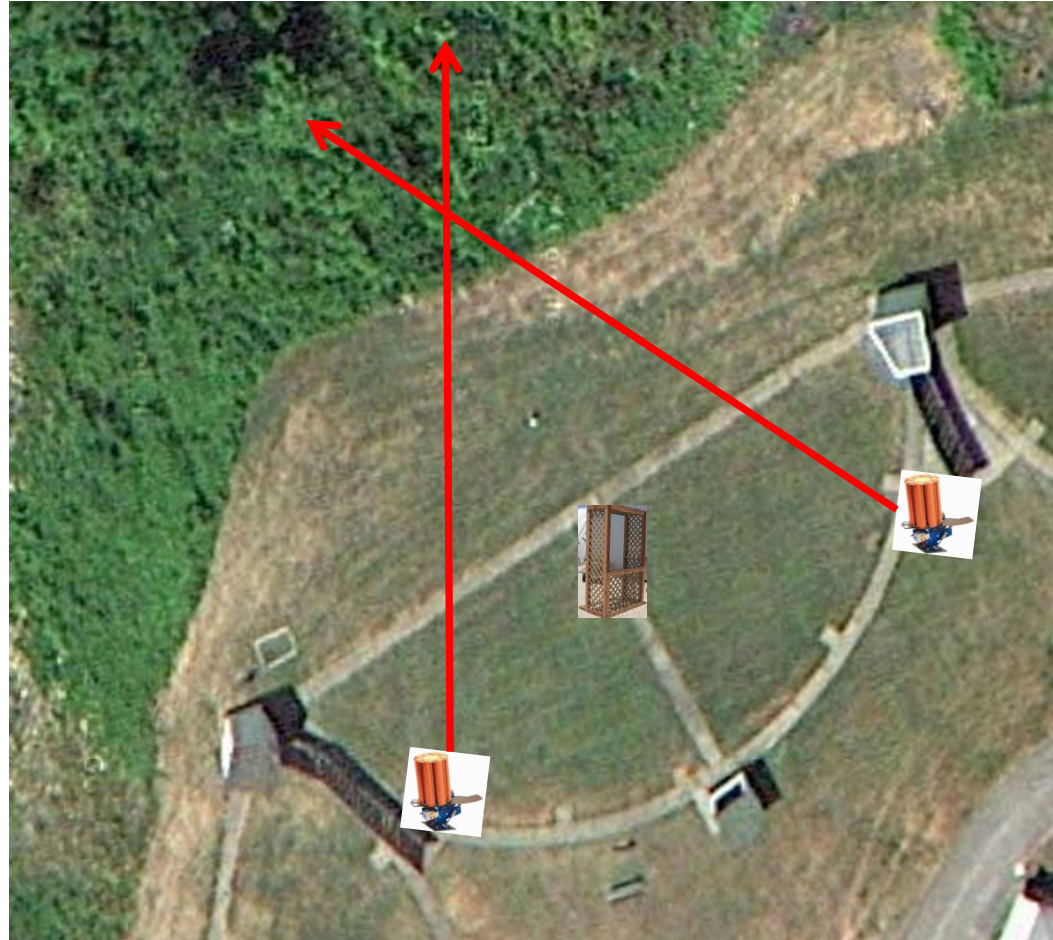
3 Simo Pair (6)
Trap House and Promatic

Skeet 3



3 Report Pair (6)
Promatic (Right) then Promatic (Left)

Skeet 4



3 Simo Pair (6)
Promatic (Left) and Promatic (Right)

Skeet 5



3 Following Pair (6)
Mec Battue then Mec Battue
(* Try Black Side Up *)
Lighten Spring A lot

Skeet 6



4 Simo Pair (8)
Promatic (Teal) and Promatic (Chondel)

The Pit



The Menu – 11/11/2017

1) Trap Field	- 3 Simo Pair	- Trap House and Promatic	(6)
2) 5-Stand	- 2 Report Pair	- Trap House then High House	(4)
3) Skeet #2	- 2 Simo Pair	- Manual (MIDI's)	(4)
4) Gallows	- 2 Following Pair	- Promatic then Promatic Hold the Button Down	(4)
5) Skeet #3	- 3 Simo Pair	- Trap House and Promatic	(6)
6) Skeet #4	- 3 Report Pair	- Promatic (Right) then Promatic (Left)	(6)
7) Skeet #5	- 3 Report Pair	- Promatic (Left) then Promatic (Right)	(6)
8) Skeet #6	- 3 Following Pair	- Mec Battue then Mec Battue Hold the Button Down	(6)
9) The Pit	- 4 Simo Pair	- Promatic (Teal) and Mec Chondel	(8)

			(50)