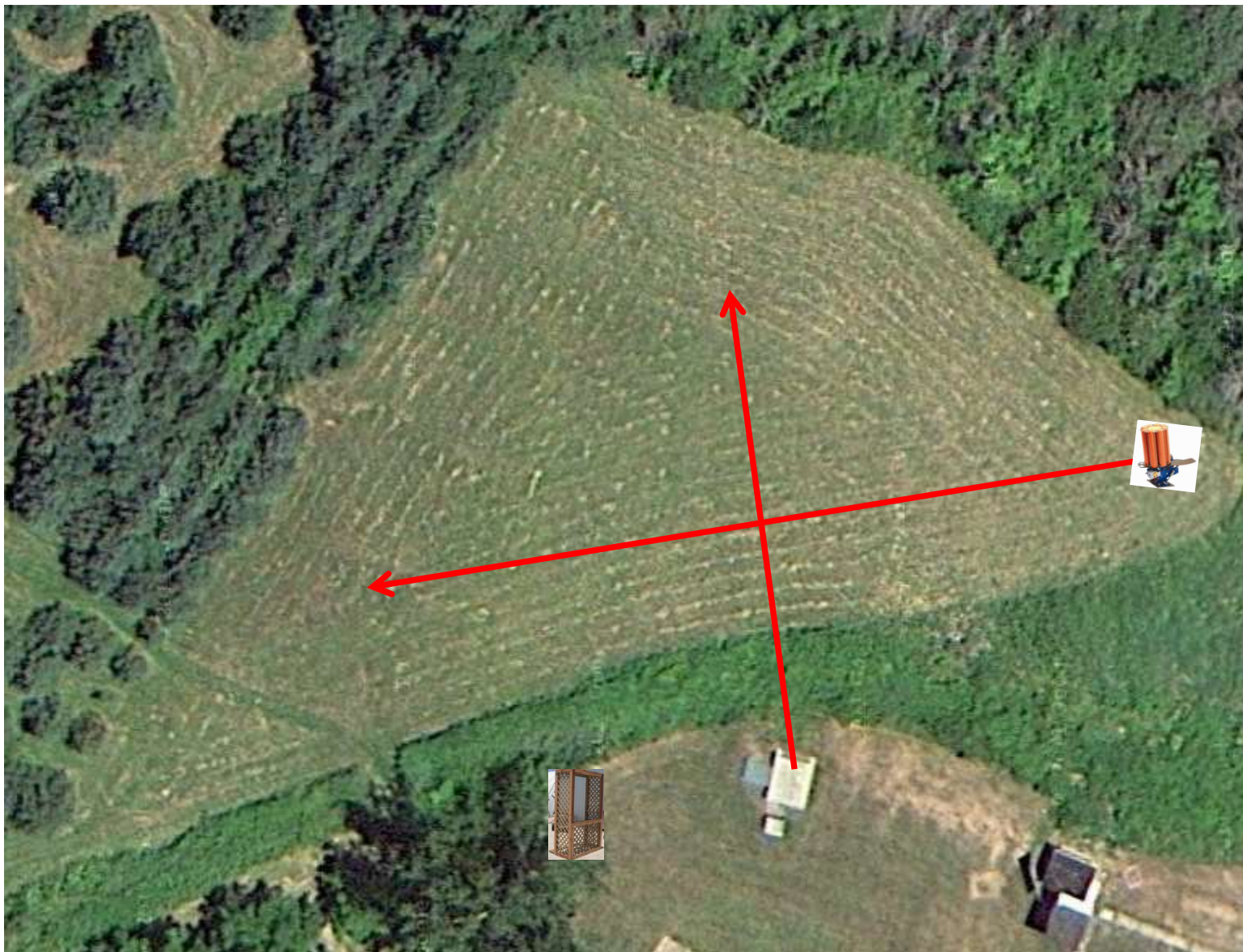


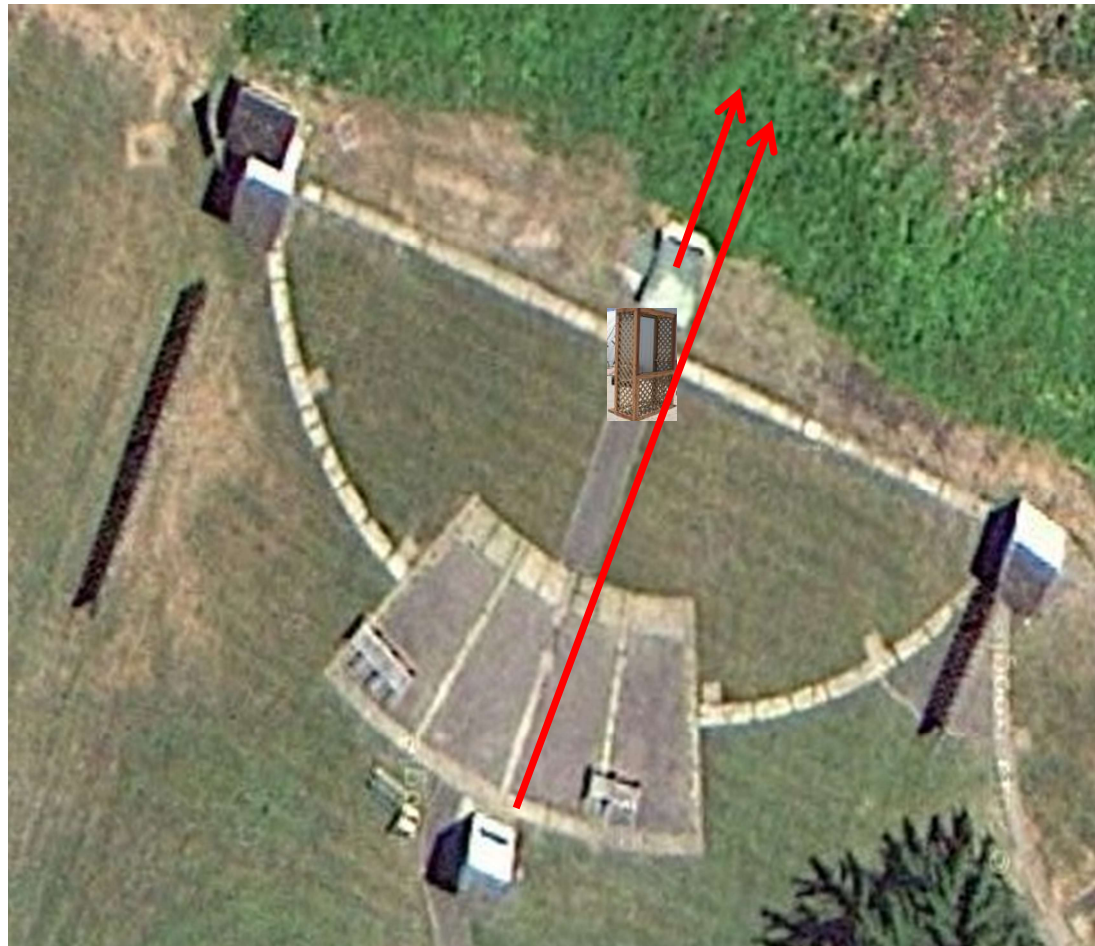
3 Report Pair (6)
Trap House then Promatic

Trap Field



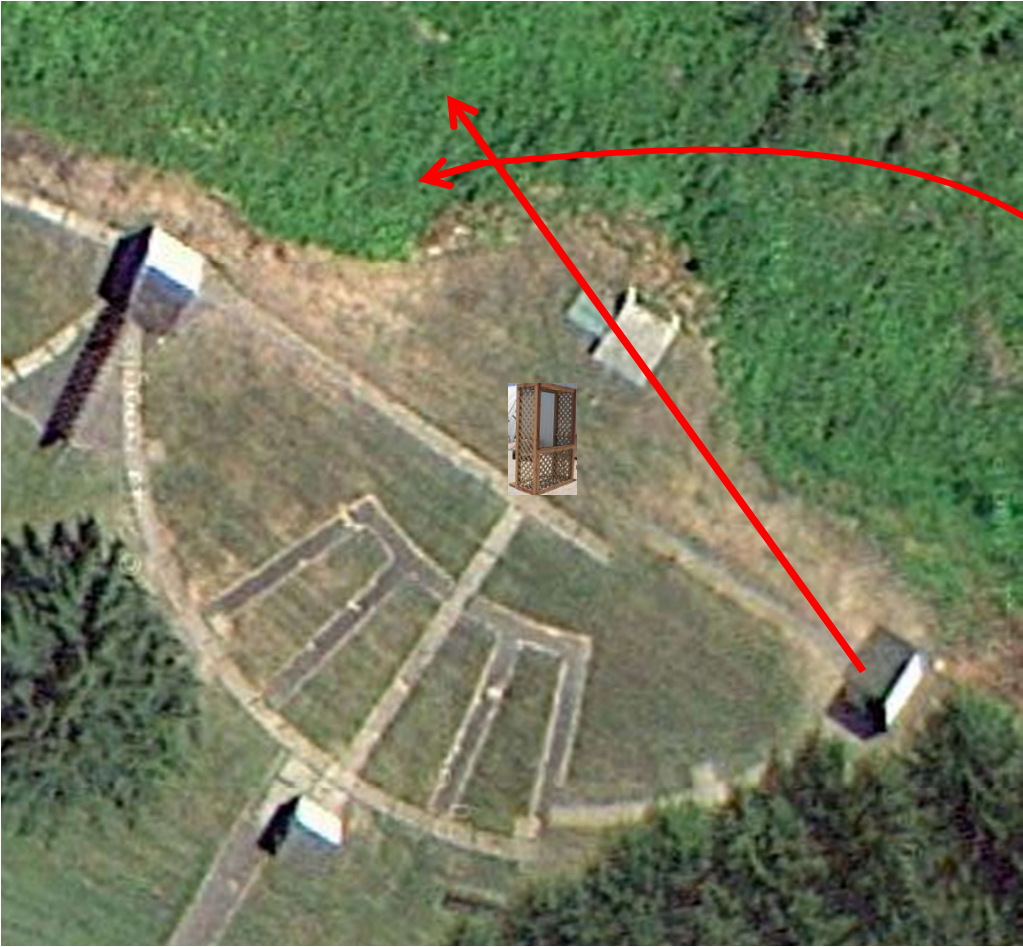
2 Simo Pair (4)
Trap House and Overhead

5-Stand



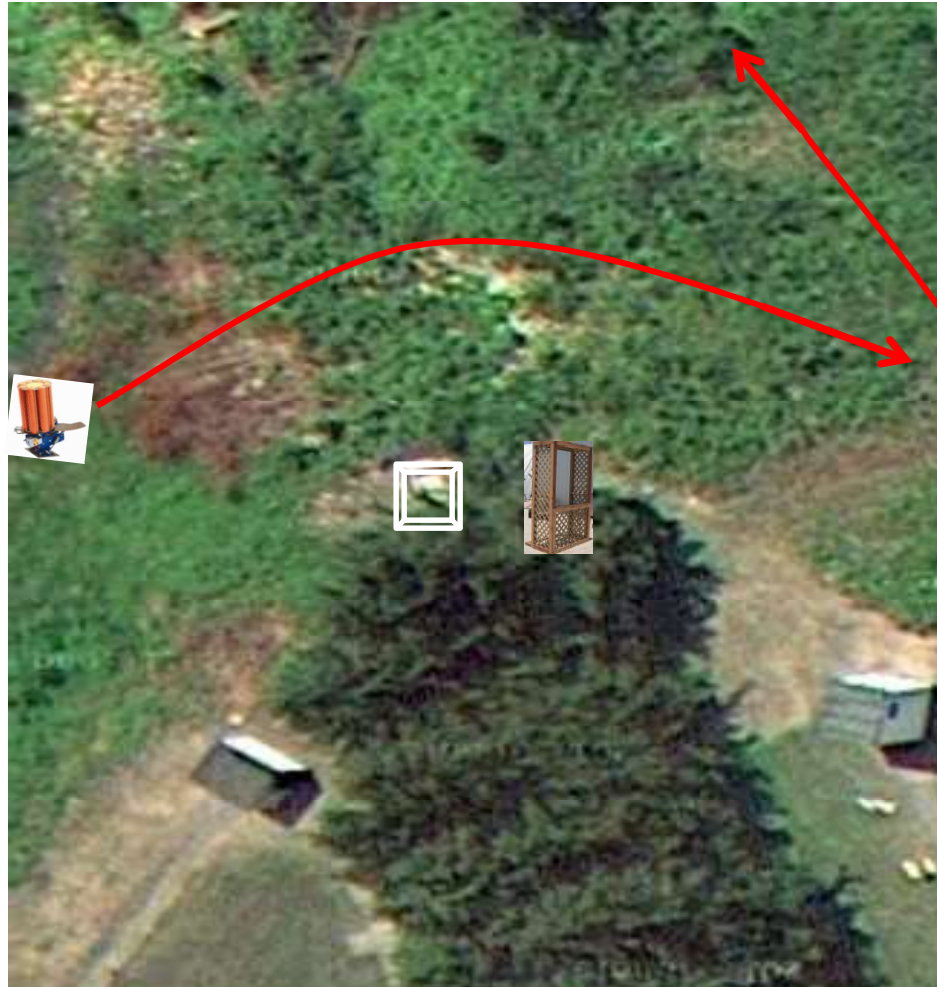
2 Simo Pair (4)
Mec Chondel and Low House
MIDI's (Mid Size Targets)
Same Target as Last Week

Skeet 2



2 Simo Pair (4)
Promatic and Promatic

Gallows



Up by the
High House

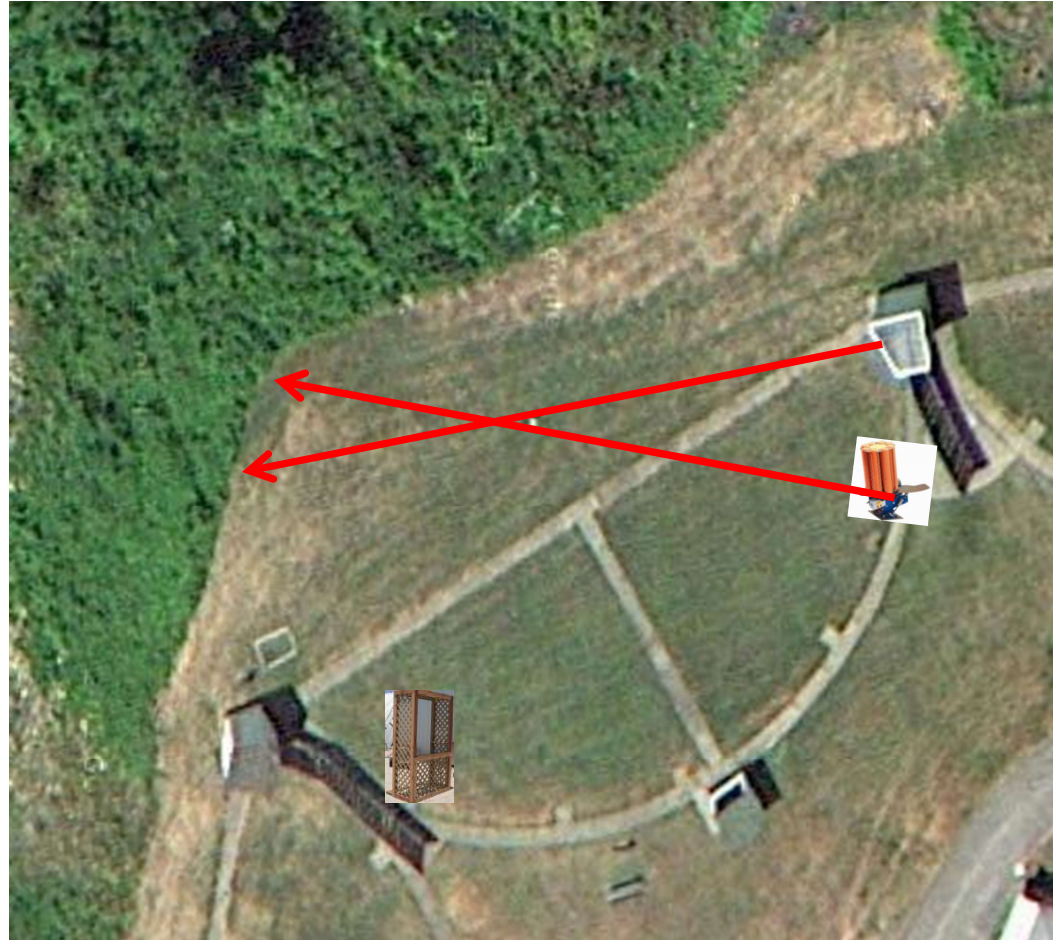
3 Simo Pair (6)
Trap House and High House
Same as Last Week

Skeet 3



3 Simo Pair (6)
Low House and Promatic

Skeet 4



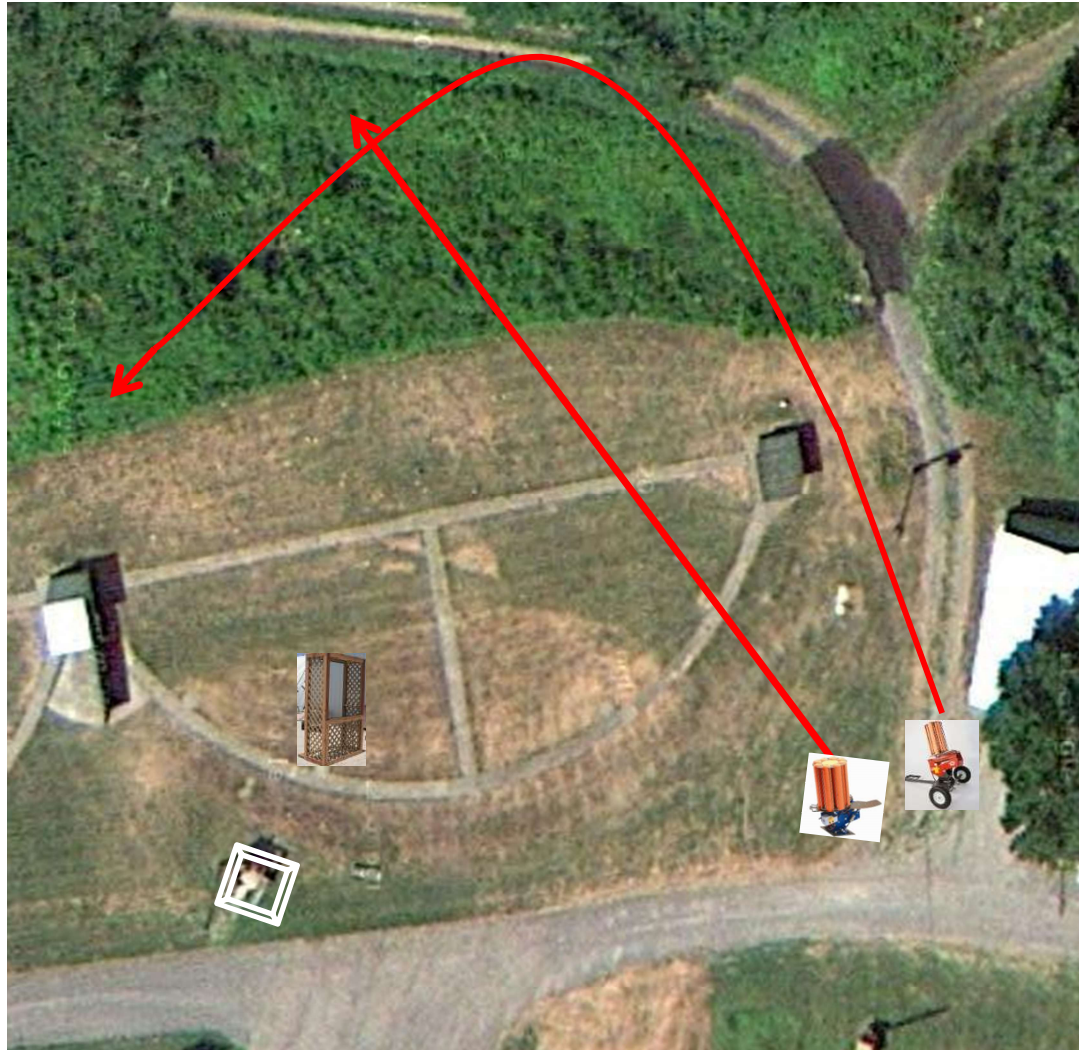
3 Simo Pair (6)
Promatic and Promatic

Skeet 5



3 Simo Pair (6)
Promatic and Mec Battue
(* Try Orange Side Up *)
Tighten Spring

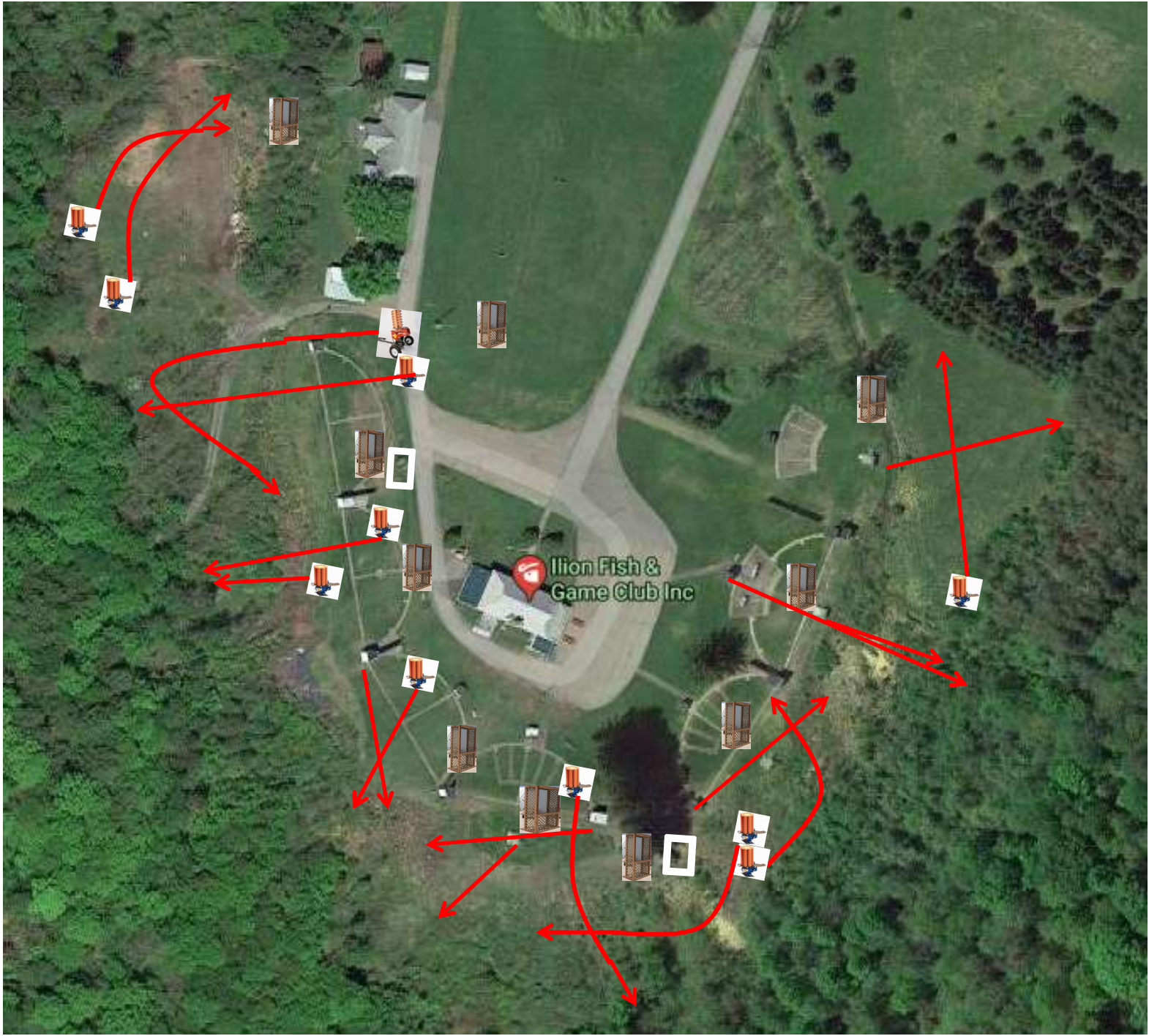
Skeet 6



3 Simo Pair (6)
Promatic and Promatic
Same as Last Week

The Pit





The Menu – 12/16/2017

- | | | | |
|---------------|-----------------|---|-----|
| 1) Trap Field | - 3 Report Pair | - Trap House then Promatic | (6) |
| 2) 5-Stand | - 2 Simo Pair | - Trap House and Overhead | (4) |
| 3) Skeet #2 | - 2 Simo Pair | - Mec Chondel (MIDI's) and Low House | (4) |
| 4) Gallows | - 3 Simo Pair | - Promatic and Promatic | (6) |
| 5) Skeet #3 | - 3 Simo Pair | - Trap House and High House | (6) |
| 6) Skeet #4 | - 3 Simo Pair | - Low House and Promatic | (6) |
| 7) Skeet #5 | - 3 Simo Pair | - Promatic and Promatic | (6) |
| 8) Skeet #6 | - 3 Simo Pair | - Promatic and Mec Battue | (6) |
| 9) The Pit | - 3 Simo Pair | - Promatic and Promatic | (6) |

(50)