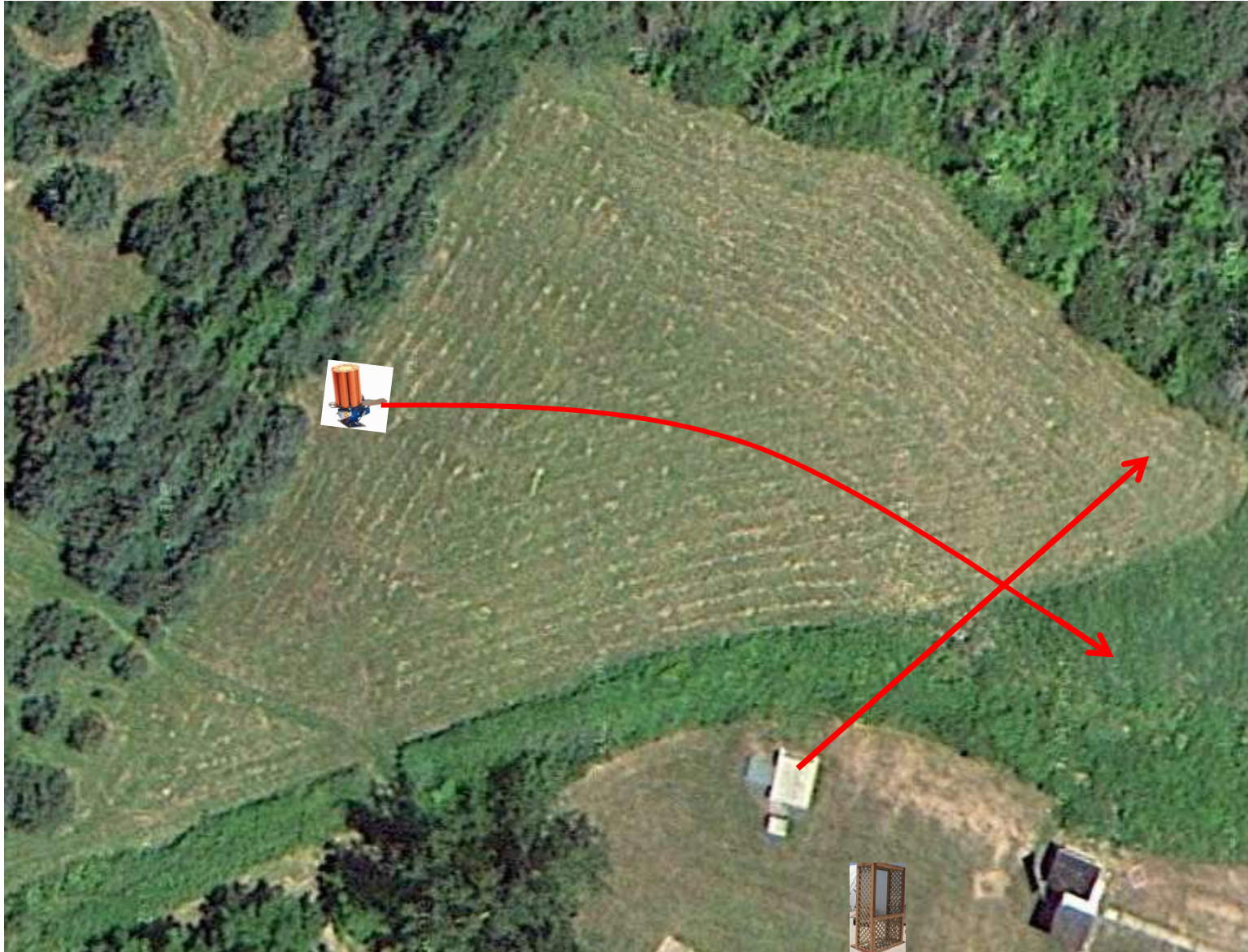


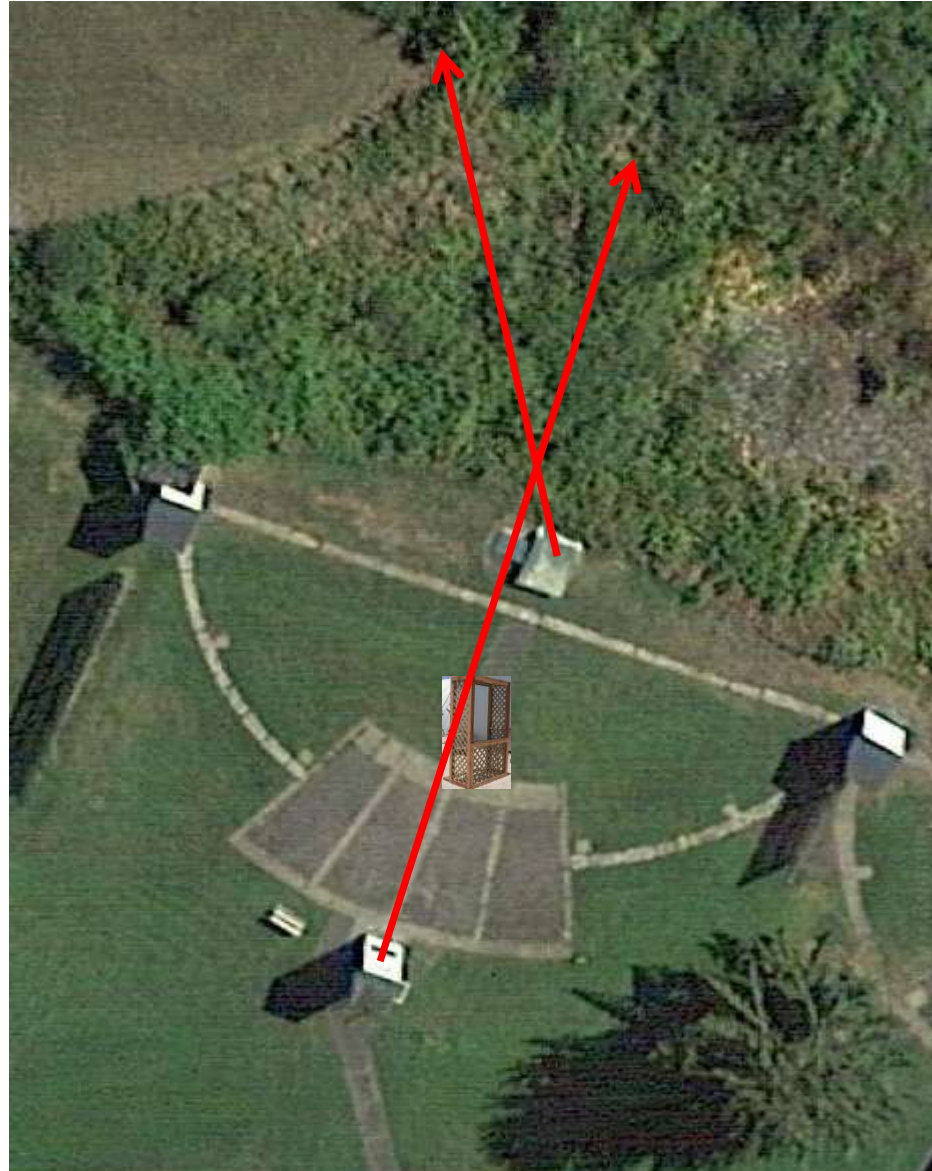
3 Simo Pair (6)  
Trap House and Promatic  
\*Promatic Low

# Trap Field



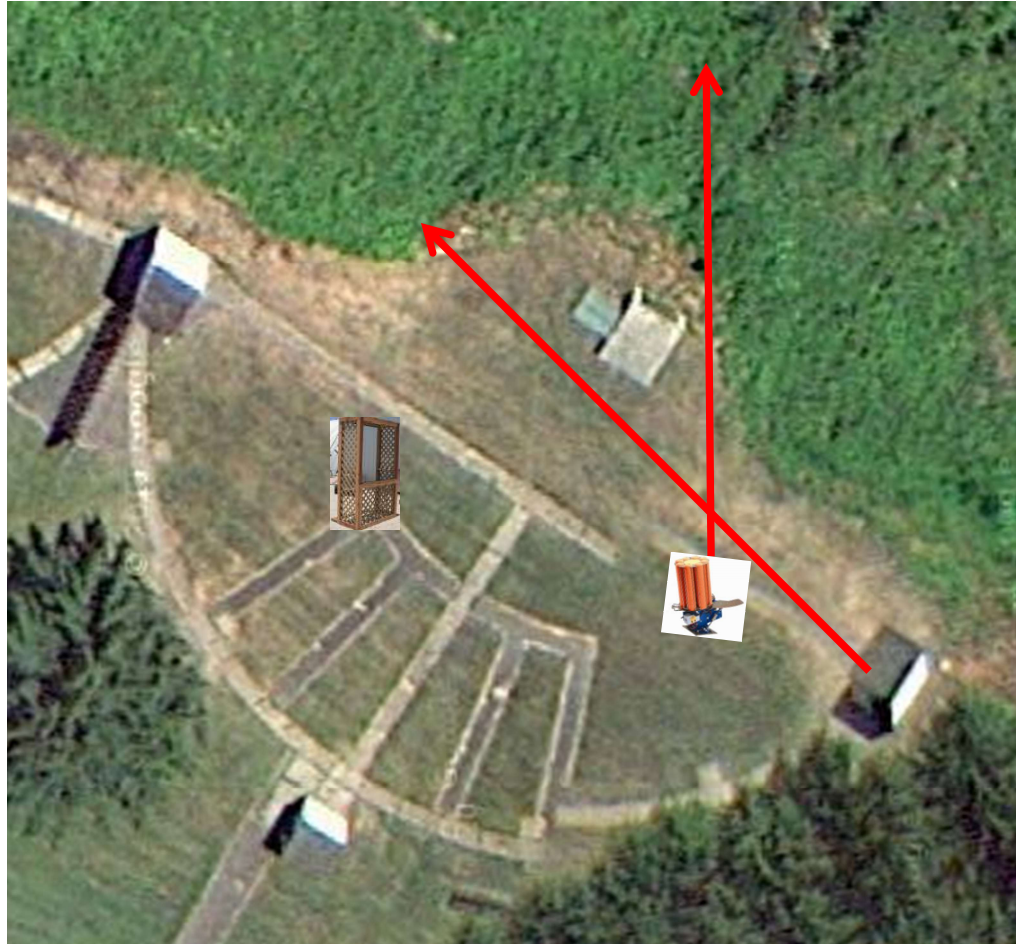
3 Report Pair (6)  
Trap House then Overhead

5-Stand



3 Report Pair (6)  
Low House Then Promatic  
\*Promatic Low

# Skeet 2



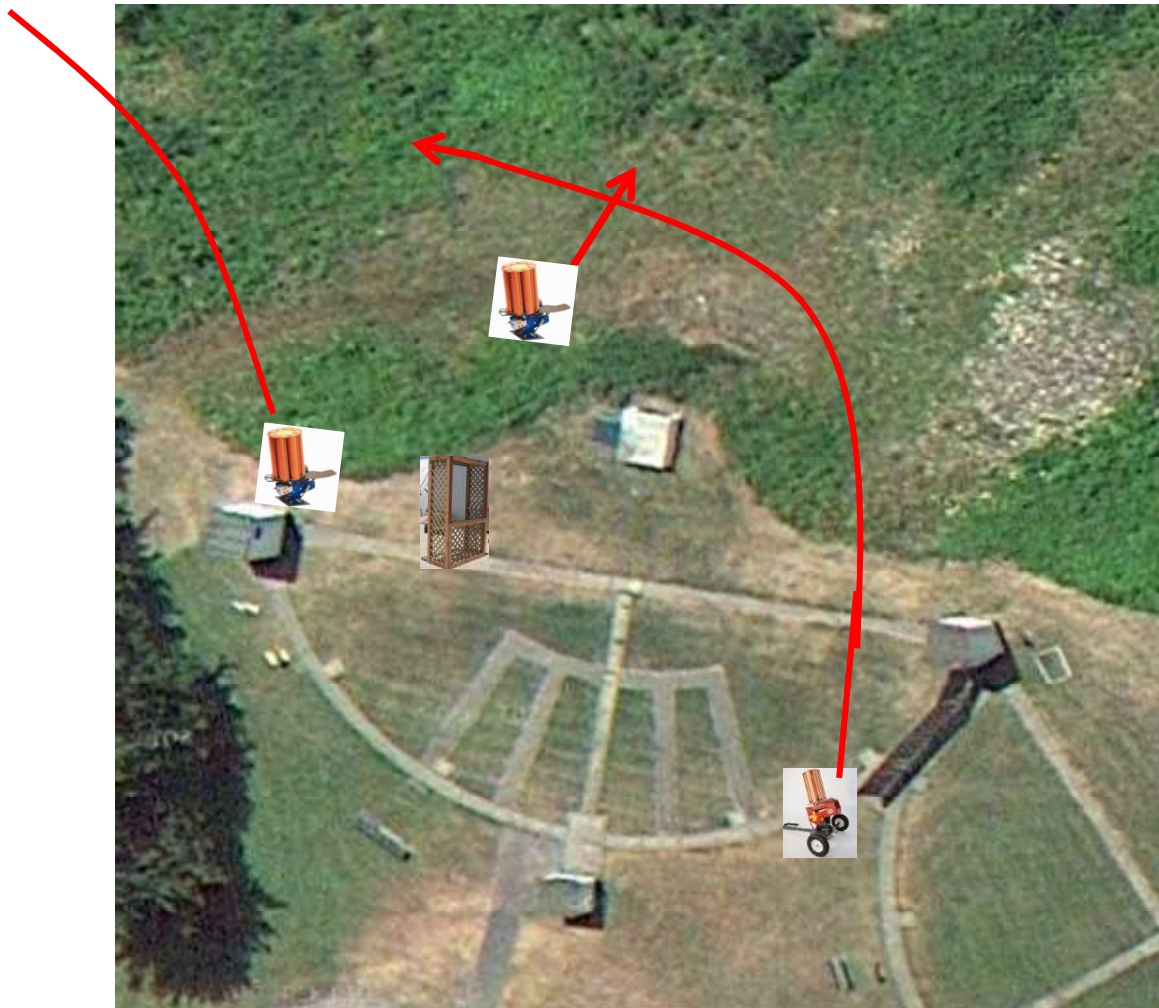
2 Following Pair (4)  
Promatic and Promatic  
**Hold the Button Down**  
\*Promatic Low

# Gallows



3 Report Pair (6)  
Promatic (Teal) then Mec Battue

# Skeet 3



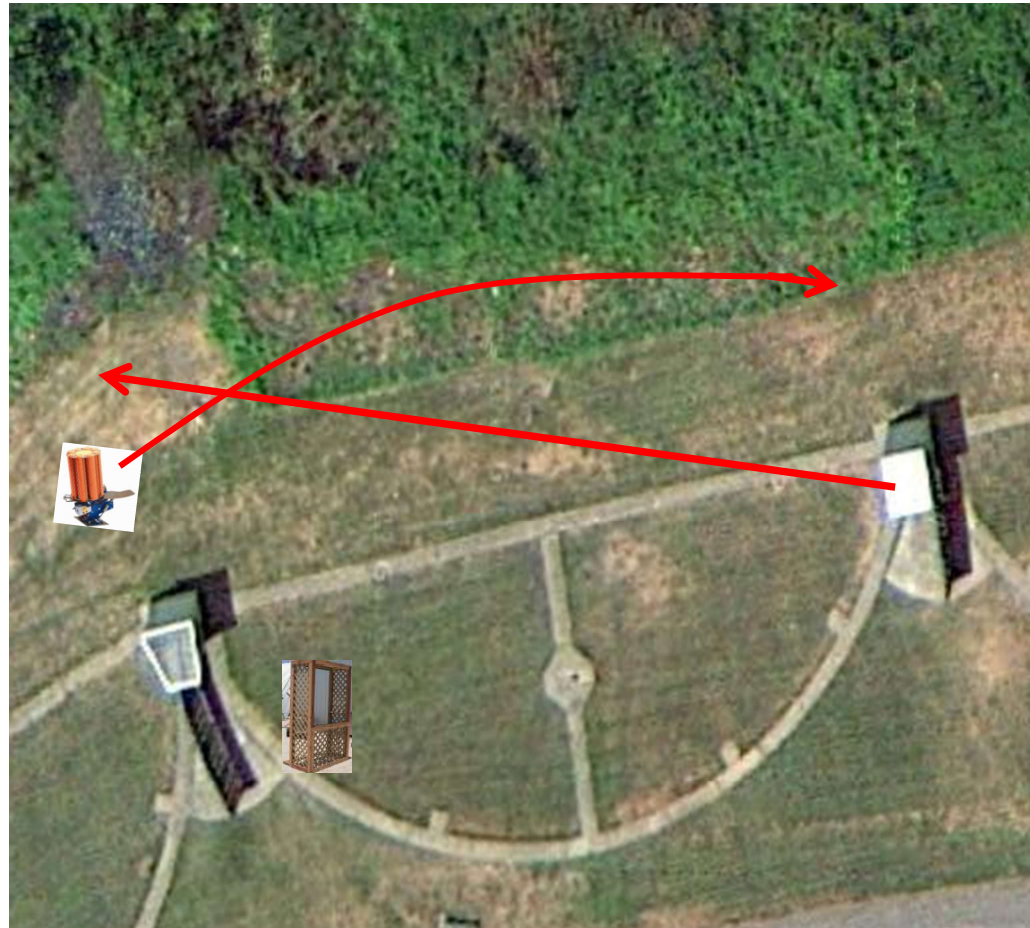
3 Simo Pair (6)  
High House and Promatic  
\*Cage station 6

# Skeet 4



3 Simo Pair (6)  
Low House and Promatic  
\*Cage station 2

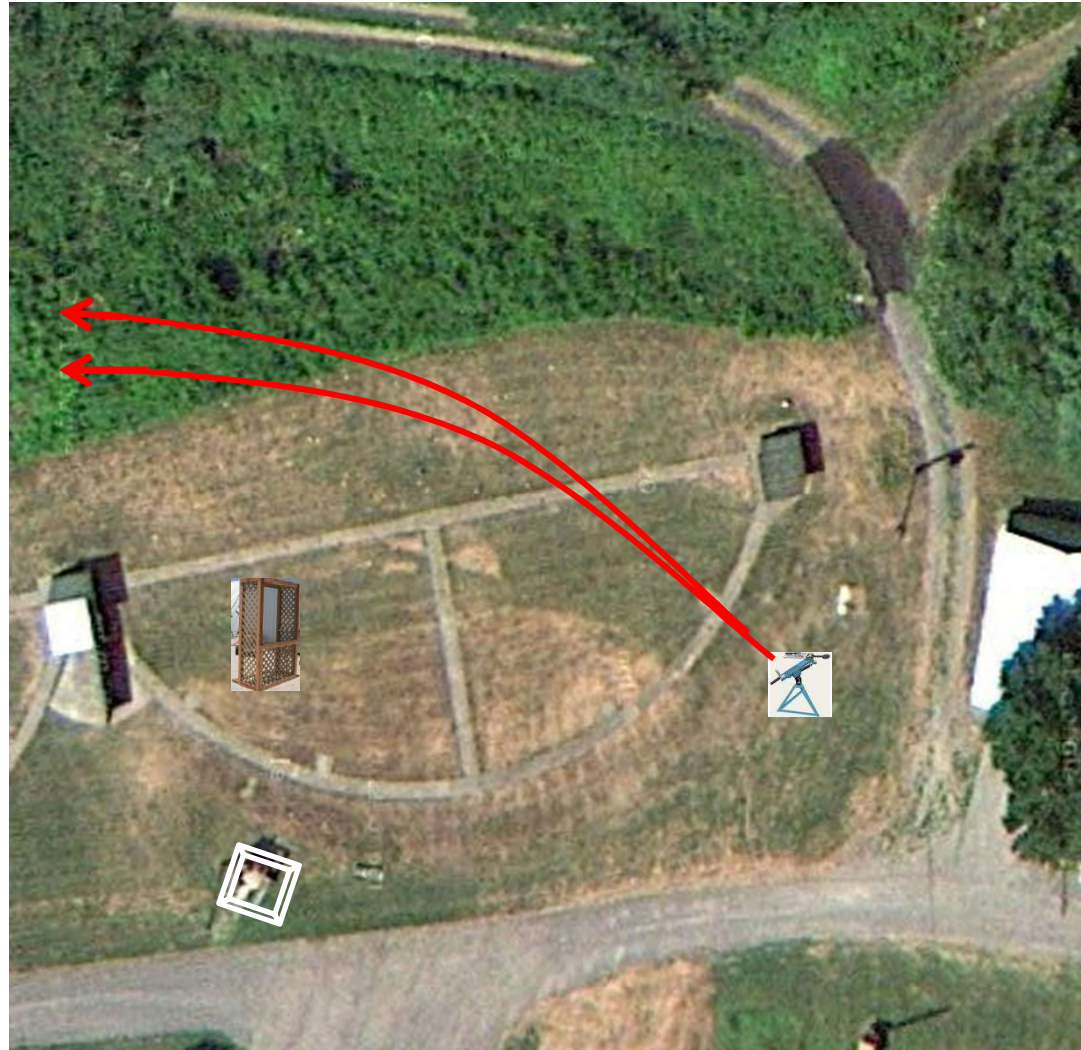
# Skeet 5



2 Nested Pair (4)  
**Standard and Mini**  
Manual Trap (Tippy)

# Skeet 6

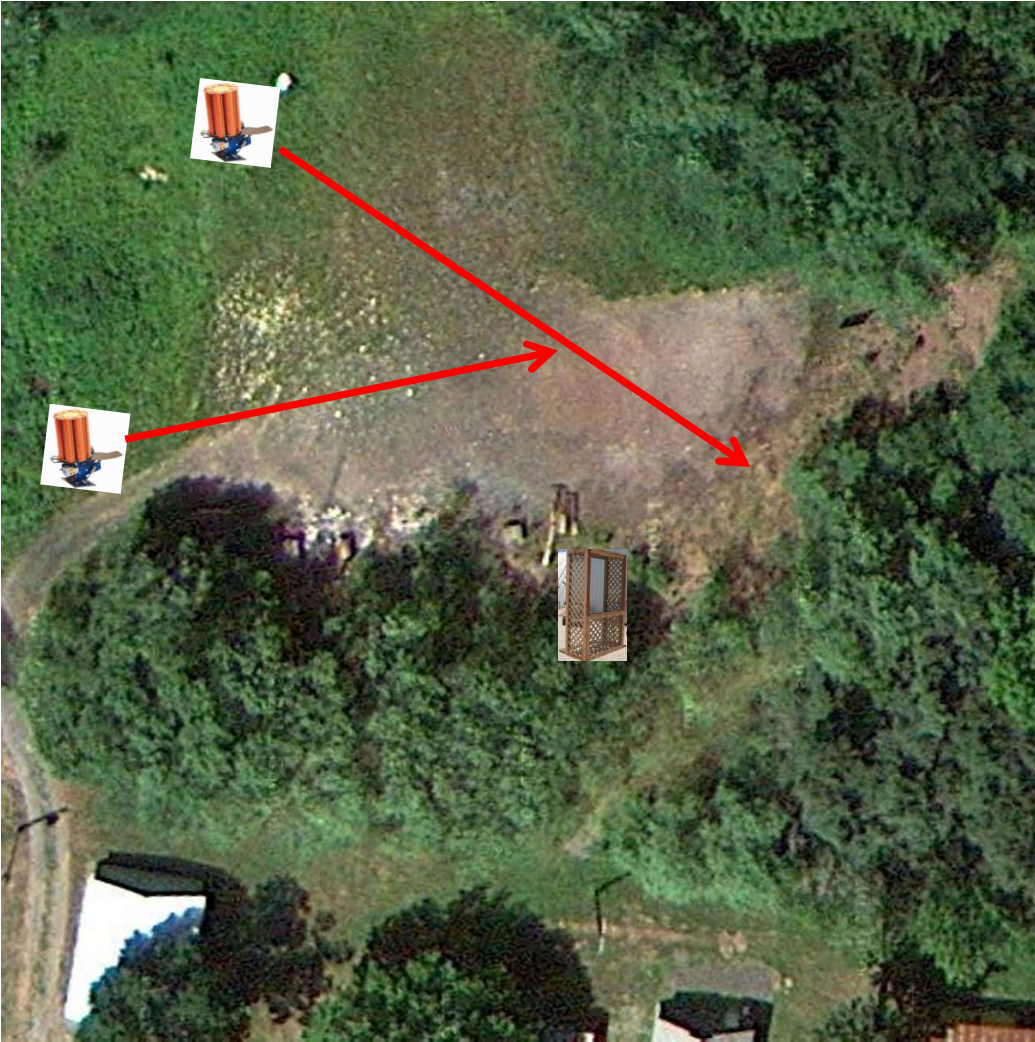
\*Trappers will switch out every ½ hour

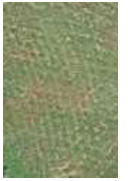




3 Simo Pair (6)  
Promatic (Teal) and Promatic  
\*Incomer Low; Left (Teal)

# The Pit





# The Menu – 02/24/2018

1) Trap Field	- 3 <b>Simo Pair</b>	- Trap House and Promatic	(6)
2) 5-Stand	- 3 <b>Report Pair</b>	- Trap House then Overhead	(6)
3) Skeet #2	- 3 <b>Report Pair</b>	- Low House then Promatic	(6)
4) Gallows	- 2 <b>Following Pair</b>	- Promatic then Promatic <b>** Hold The Button Down **</b>	(4)
5) Skeet #3	- 3 <b>Report Pair</b>	- Promatic (Teal) then Mec Battue	(6)
6) Skeet #4	- 3 <b>Simo Pair</b>	- High House and Promatic	(6)
7) Skeet #5	- 3 <b>Simo Pair</b>	- Low House and Promatic	(6)
8) Skeet #6	- 2 <b>Nested Pair</b>	- Manual Trap ( <b>Standard and Midi</b> ) <b>** Top Rail **</b>	(4)
9) The Pit	- 3 <b>Simo Pair</b>	- Promatic and Promatic (Teal)	(6)
			-----
			(50)